

Double Breast Vaccinator

Spare parts / Consumables



Dripping chamber

Advised consumption: Once a day / Every vaccine exchange
 Packaging: Single packed; sterilized

Item No.: 8300025431



HSW ECO® Luer Lock reusable needles

Demand: min. one needle every 1.000 shots
 Packaging: 12 pcs. / box

Needle size: **1,2 x 25 mm / 18G x 1"** (Recommended)
 Item No.: 8021120256



Syringe spare part set

Demand: one pack per syringe every 100.000 injections
 Item No.: 8300033768



For each syringe one spare part set is needed!



Syringe 0,5ml

Item No.: 8300031938



Syringe 0,3ml

Item No.: 8300032006



Syringe 0,25ml

Item No.: 8300032007



Breast plate moulds for

Young layers*

Item No: 8300035694

Layers

Item No: 8300032035

Breeders

Item No: 8300033391

* Available upon request with longer lead time and min. order quantity



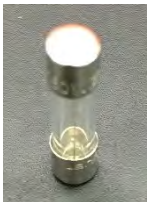
Measuring cup 10mL

Item No: 8300033891



Injection depth / angle adjustment tool

Item No: 8300033401



Fuse F 4.0A 5x20mm

Item No: 8300036307



Adjustment plate (incl. syringe fixture / without syringes)

Item No: 8300039611



Cable clip

Item No: 8300031915

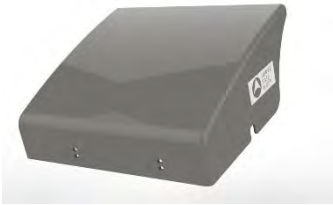


Vial holder extension

Item No: 8300035721

**Vial holder**

Item No: 8300036331

**Closure**

Item No: 8300048417

**Lubrication oil**

Item No: 8300027303

**Needle nut**

Item No: 8300021989