

# ▶ HSW ULTRA-ASEPT®

2 ml/3 ml/5 ml/10 ml/50 ml

**Wiederverwendbare Injektionsspritzen für die Humanmedizin**  
**Reusable injection syringes for human applications**

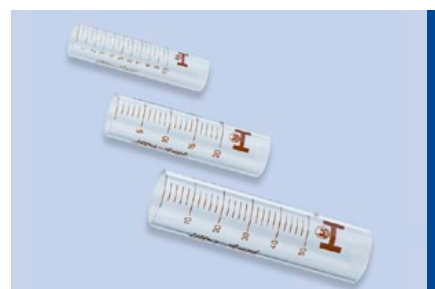
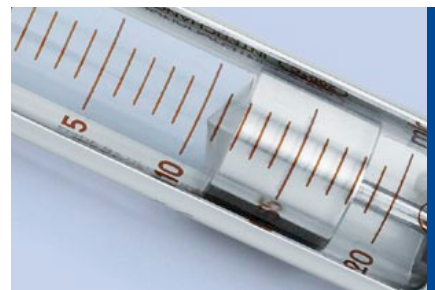


- ▶ solide Glas-/Metallausführung
- ▶ graduierter Glaszylinder mit Präzisionsschliff
- ▶ vollständig zerlegbar und einfach zu reinigen
- ▶ eingeschliffener Edelstahlkolben
- ▶ autoklavierbar bei 134 °C oder 273 °F
- ▶ mit Luer-Lock-Ansatz
- ▶ Größe 2 – 10 ml in 3-Ring-Ausführung,  
Größe 50 ml in Standard Luer-Lock-Ausführung
- ▶ durable glass and metal design
- ▶ graduated glass cylinder with precision cut
- ▶ can be completely dismantled and is easy to clean
- ▶ precision ground stainless steel piston
- ▶ autoclavable at 134 °C or 273 °F
- ▶ with Luer Lock attachment
- ▶ size 2 – 10 ml in 3-ring design,  
size 50 ml in standard Luer Lock design



- ▶ **Lieferumfang**                      ▶ **Included in delivery**
- 1x Spritze                                      1x syringe

▶ Ausführung/Version	Vol./ml	Artikel-Nr./Item no.
HSW ULTRA-ASEPT®	2 ml	2402030124
Luer-Lock-3-Ring-Ausführung/	3 ml	2403030124
HSW ULTRA-ASEPT®	5 ml	2405030124
Luer Lock 3-ring version	10 ml	2410030124
HSW ULTRA-ASEPT® Luer-Lock/ HSW ULTRA-ASEPT® Luer Lock	50 ml	2450030100



Ersatzteile/Spare parts	Vol./ml	Artikel-Nr./Item no.
Glaszylinder/glass barrel	2 ml	2402200100
	3 ml	2403200100
	5 ml	2405200100
	10 ml	2410200100
	20 ml	2420200100
	30 ml	2430200100
	50 ml	2450200100